



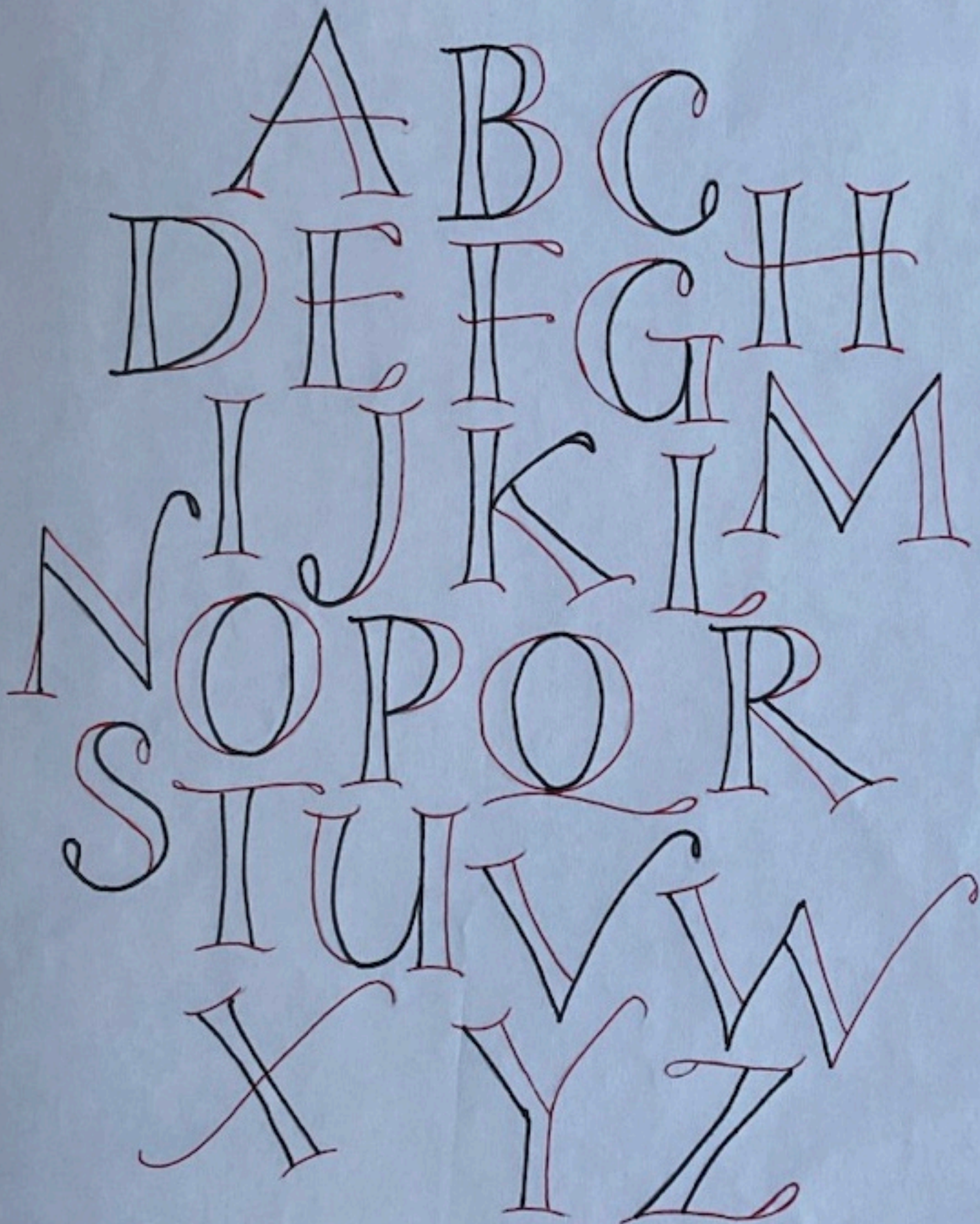


Tips for Drawing Playful Letters

- Stem strokes are waisted  not straight.  
- Arches are high and narrow like a train tunnel.
- Round shapes are more oval/compressed. 
- The 'o' is more easily drawn in 2 strokes than one.
- "Inside strokes" are drawn first to maintain the integrity of curves (shown in black on exemplar)
- "Outside strokes" are drawn second (shown in red on exemplar)
- Serifs are added last.
- Process:
 1. Outline letters in pencil. The more open you make strokes, the more room to color.
 2. Go over with fine black pen (.5 or less)
 3. Using colored pencils, choose three: light, medium, and dark. Start with the lightest shade and color the whole letter using light pressure and circular motions.
 4. Next add medium color, from the bottom or the top, using long, flicking strokes to approx. halfway up or down the letter.
 5. With the darkest color, use the same flicking motion, but shorter with more pressure.
 6. Now go over it all with a colorless blender pencil, and blend the colors. It brightens and softens the texture.
 7. Optional: add shadow using Faber-Castell Pitt "warm grey." Choose one side of the letters and be consistent. Lay brush marker down on side and add mark beside letter. Can also add twinkle (over the shadow) with "Clear Star" Gelpen, and white dots with white Sharpie poster paint pen.

Uses: Envelopes, cards, posters, broadsides, menus, etc.

PLAYFUL LETTERS
CAPITALS



*Inspired by Christy Schroeder
Drawn by Laura Drager*

Playful Letters

I i h n m n u f r k k

o b c d e g g p d a

v w x y G & Z

j t s s

re
and tucking
the letters...

Ca

1 2 3
4 5
6 7 8 9 0 4

Inspired by Christy Schroeder
Drawn by Laura Drager