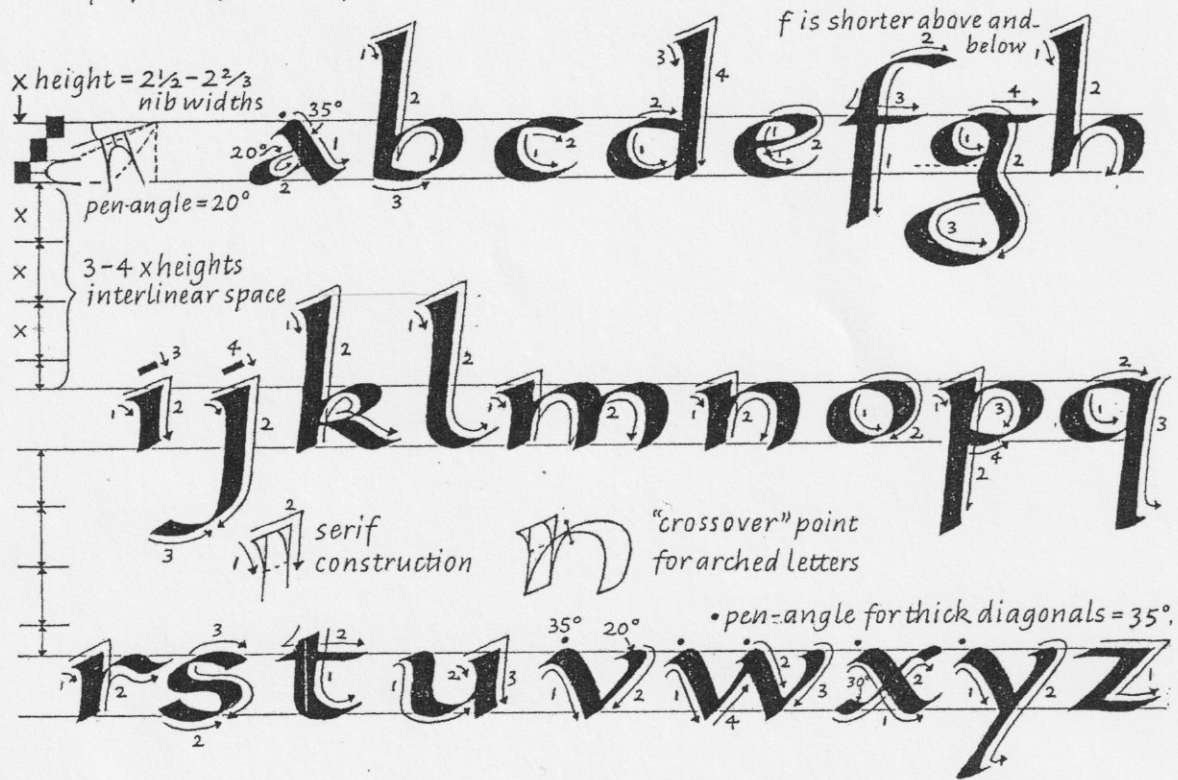


tre dicta ciuitate nazareth uenit et habitauit in
naum maritima in finibus zabulon et nephtalim
adimpleretur quod dictum est per esaiam prophetam

Example from a 9th century manuscript



Page showing ductus of S.W.'s modernization of a ninth century Carolingian hand, prepared for the new edition of the *Speedball Book* - 1991 or 92. Sheila Waters

Fig. 5

Enlarged to twice original size

t a t e n a z a r e t h u e n i t e t h a b i t a u
 r space not solved round t's tall clubbed ascenders

f (with crossbar & longer stem) taller e before t

bouncing arches

a m a m . i n f i n i b ; z a b u l o n e t n e p t

four body heights of interline space

no i dots yet symbol for letter(s) omitted long S (no crossbar, shorter stem)

u r q u o d d i c t u m . e . p e r e s a i a p r o

very wide bowls Pen angle varies but is predominantly about 20°

A
 Alcuin Bible
 Tours, France
 9th century
 Enlarged 200%. Shown actual size in Fig. 1

bursts into tears, and, in the
 er salty howling, nimbly spe
 atfish and pelicans it whole

B
 Sheila Waters
 Modernized version for Dylan Thomas's *Under Milk Wood*
 1961
 Enlarged to almost twice original size for comparison with its historical inspiration

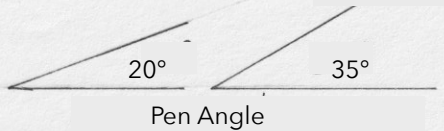
And she bursts into tears, and, in the mid-
 dle of her salty howling, nimbly spears a
 small flatfish and pelicans it whole:

C
 Sheila Waters
 Actual size and weight used for the text
 Mitchell size 3 steel nib

And she bursts into tears, and, in the mid-
 dle of her salty howling, nimbly spears
 a small flatfish and pelicans it whole:

D
 Sheila Waters
 An alternative lighter weight tried out
 with similar line spacing
 Mitchell size 4 steel nib

Carolingian Guideline for C-2 & 3mm nibs



5° slant

Handwriting practice lines with slanted vertical guides. The page contains four sets of horizontal lines, each with a slanted vertical line on the left. The first set includes a grid of blue and black squares and a handwritten 'X'. The other three sets each contain a single handwritten 'X' at the beginning of the line.